

SET-UP



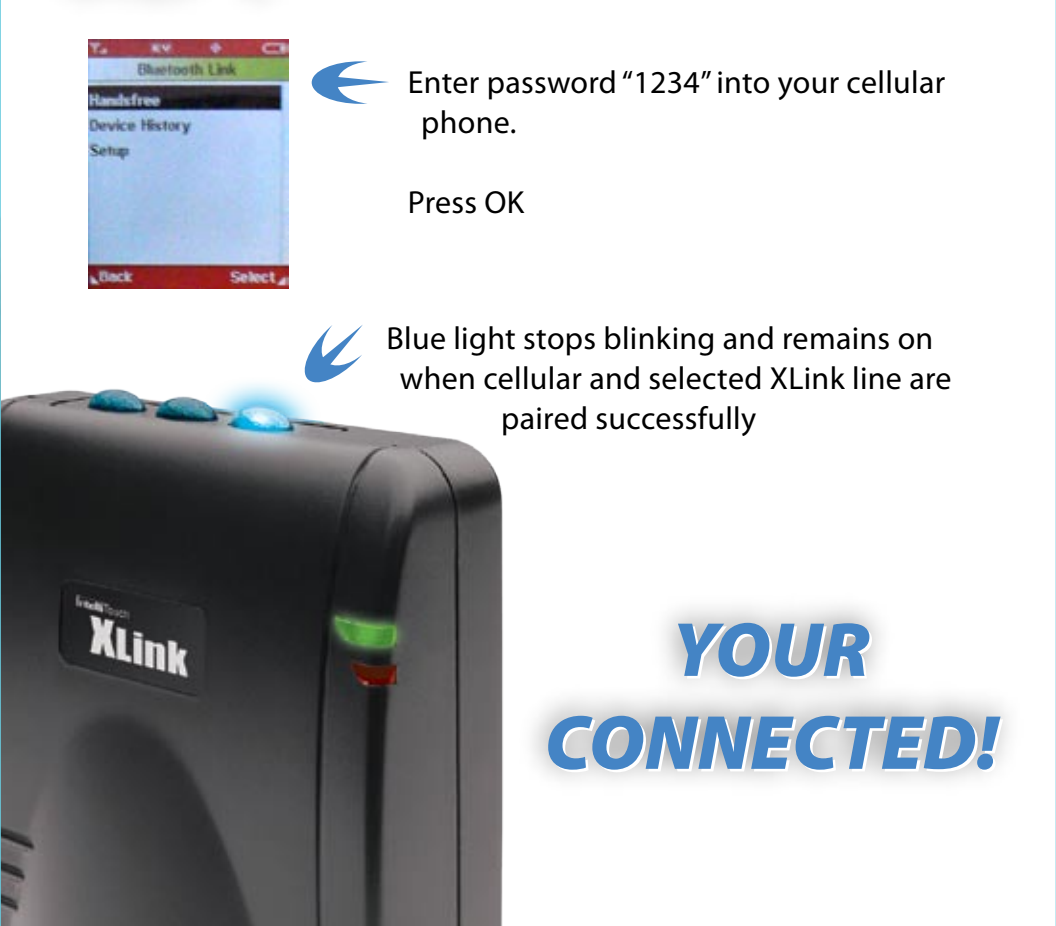
STEP 1 Plug-in & Connect



STEP 2 Ready for Pairing



STEP 3 Pair Cellular Phone to XLink



IntelliTouch
XLink
ITC-BT

For customer service contact
your point of sale or visit:
www.intellitouch.com

Made in China
Copyright © IntelliTouch
XLink is a registered
Trademark of IntelliTouch.
All rights reserved.

IntelliTouch
San Diego CA, 92121

OUTLETS



NOTES

- Bluetooth enabled cellular phone required
- XLink can be placed upright with stand or lay flat
- Pair up to 3 cellular phones to your XLink
Each line [•], [••], or [•••] pairs to one cellular phone
- Once paired, your cellular phone and your XLink will automatically connect via Bluetooth when in range
- To disconnect your cellular phone from XLink simply press the blue appropriate line button
- To re-connect your cellular phone to XLink on the same line, simply press the same button and the light will return to steady blue
- XLink ITC-BT is designed to work with your standard phone independently of your telephone service

XLink

Bluetooth Cellular Gateway

ITC-BT



QUICKSTART GUIDE